

Shine

A brighter future
for youth with disabilities

COMMUNITY REPORT 2025



ELENA | AGE 15

SPINA BIFIDA
ART TECHNOLOGY

MY DREAM GAVE ME INDEPENDENCE



HAILEY | AGE 18

SPINAL CORD INJURY
ACCESSIBLE DRIVING EQUIPMENT

The summer after Grade 6, I was hiking with my family when I slipped on a wet rock, falling 40 feet down a waterfall. Everything went black - and when I woke up in the hospital days later, my life was forever changed. **I was paralyzed from the waist down.** I would never walk again.

That September, I didn't start Grade 7 with my friends. Instead, I was in rehabilitation, adjusting to life in a wheelchair. To be honest, it wasn't a positive time for me. I wasn't a regular teenager anymore so I distanced myself from the activities I once loved. **Focusing on school was the only predictable activity I could trust.**

Once I entered university, I began to have a different perspective. I was ready to find myself, spend time with friends, pick up new hobbies, get a part-time job and prioritize my independence! **But the biggest barrier was the cost of the adaptive driving equipment I needed.**

Thanks to your generosity, my Shine Dream came true with a **transfer board** for my car that helps me get in the drivers' seat and a **lift to load my wheelchair** in my car without waiting for anyone's help! It opened up my whole world! **Now thanks to donors like you, I can go anywhere on my own and discover what truly brings me joy.**

THE MOST EXCITING PART? YOUR IMPACT DIDN'T STOP WITH ME!



Because of your support in 2025, even more Dreams were fulfilled for young people just like me living with severe physical disabilities. Youth like me who dreamed of more independence, reaching their goals, and learning that a bright future is within their reach.

You helped *ME* feel seen, supported, and celebrated and *ALSO* started a ripple effect that changed lives across Canada.

On behalf of all Dreamers, thank you so much for supporting Shine!

♡ Hailey

A NOTE FROM OUR CEO

This past year we've had the privilege of telling deeper stories that showed impact beyond the Dream itself – like Anneka's basketball wheelchair (pictured right). She hopes to use her experiences to help kids with disabilities discover new strengths and possibilities within themselves through adaptive sports as a coach and ambassador.

Your support is what makes Dreams a reality! Thank you!

Because of your generosity, young people aged 11-21 living with severe physical disabilities can feel more confident, capable, and inspired for what's next.

You make them feel seen, showing that they are MORE than their disability!

This was truer than ever for Scarlette, whose story was featured for our 9,000th Dream. Thanks to our talented and generous partners at Mint, Scarlette's story reached audiences in Cineplex and on digital platforms across the country, opening conversations about accessibility in the beauty industry. We couldn't be more proud of how far Scarlette has come in finding and expressing her authentic self.

Despite a tough climate in the sector, our team radiated Scarlette's boldness while maintaining (and often exceeding) the quality of what we do best - Dreaming BIG!

To our donors, in-kind supporters, referral partners, and the companies and organizations who made this year so iconic: **thank you.** I'm grateful for your continued support as we show up for young people with big dreams, celebrate what's possible, and continue building a more accessible Canada.

Here's to creating even more brighter futures together in 2026!



Tiffany Houston,
Chief Executive Officer

OUR BOARD OF DIRECTORS MAKE FUTURES BRIGHT

Shine Foundation is governed by a volunteer-based, national Board of Directors comprised of highly regarded representatives from varying sectors. We are deeply grateful for the dedication they bring and the time and expertise they generously share to help set our strategic direction, oversee legal and financial matters, and open doors to new friends of the Foundation.

Thank you to our Board members who continued to support and provide guidance in 2025:

Brian Henderson, Board Chair &

Brian Flaman, Board Vice Chair

Sarah Brouwer, Jim Cassidy, Alan Hollingsworth,

Daniella Macri, Dr. Michelle McNeill, Taylor Lindsay-Noel,

Marco Pasqua, Dan Pompilii, Michelle Ribout,

Michelle Saba.



Shine Board members, staff, Dreamers, and guests were invited to join us on National AccessAbility Week to ring the bell, opening the Toronto Stock Exchange.



CELEBRATING 9,000TH DREAM



SCARLETTE'S PALETTE



Scarlette's 14, she loves punk music, and she's blind. Her Dream was for a makeover that reflected how she felt inside. **THANKS TO YOU**, Shine was able to turn that Dream into a "totally iconic" reality, showing that young people deserve to be seen for more than their disabilities. *...But we didn't just stop there.*

Her makeover revealed what the beauty industry couldn't see - a lack of accessible products for people like Scarlette. So we partnered with Cheekbone Beauty to design Scarlette her very own tactile makeup palette - a first of its kind for the blind and low vision community.

★ FEATURED IN

- CBC LONDON
- CINEPLEX
- ELLE
- ETALK
- NATIONAL POST
- TRENDSHUNTER
- VANCOUVER SUN
- VITA



“ THE WAY THIS WILL, AND HAS IMPACTED MY DAUGHTER IS SO POSITIVE AND I APPRECIATE YOU FOR HELPING HER SHINE! - SCARLETTE'S MOM ”

NINE WHO SHINE



Shine fulfilled 44 unique Dreams in nine provinces/territories for young people aged 11-21 living with severe physical disabilities across Canada in 2025. Shine Dreams address real barriers, not just the symptoms, removing practical obstacles that limit participation, inclusion, or independence which can range from adaptive equipment to access-enabling experiences.



NS

CHARLIE | AGE 14
CEREBRAL PALSY
HOME WHEELCHAIR BASKETBALL COURT WELCOMED PLAYING WITH FRIENDS OF ALL ABILITIES



PEI

KARLA | AGE 20
SEVERE VISION LOSS
VIOLIN AND LESSONS HELPED HER DISCOVER NEW SKILLS BEYOND THE INSTRUMENT



NB

ASHTON | AGE 17
CEREBRAL PALSY
ATTENDING WWE SMACKDOWN BROUGHT HIS PASSION TO LIFE, SHOWING HIM DREAMS ARE POSSIBLE



QC

WILLIAM | AGE 17
SEVERE VISION LOSS
MMA TRAINING WITH GEORGES ST-PIERRE IMPROVED HIS TECHNIQUES



ON

TIM | AGE 19
CEREBRAL PALSY
ROCKY MOUNTAINEER TRAIN RIDE INSPIRED CONFIDENCE TO TRAVEL AND SHARE HIS HOBBIES



SK

RAOUL | AGE 19
MULTIPLE SCLEROSIS
SEEING METALLICA IN CONCERT CONTINUES TO GET HIM THROUGH TOUGH TIMES



AB

JOSEPHINE | AGE 12
HURLER SYNDROME
ALL-TERRAIN RIG GAVE MORE MOBILITY TO HELP HER FAMILY ON THE FARM



BC

BLAKE | AGE 15
TRANSVERSE MYELITIS
SLEDGE HOCKEY EQUIPMENT GAVE HIM CONFIDENCE IN THE SPORT, ENCOURAGED OTHERS TO PLAY



YT

MEGHAN | AGE 14
NERVOUS SYSTEM IMPAIRMENT
E-TRIKE GAVE HER THE INDEPENDENCE TO VISIT HER FRIENDS

FUNDRAISING FOR SHINE

Across Canada, people like you showed up to fundraise in meaningful ways!

Corporate supporters, individuals, and Dream alumni hosted poker nights and golf tournaments, bakeries hosted fundraising days, Christmas markets gave back, and there was even a fun-run through strawberry fields! *You can be part of this collective effort too by starting a chat with events@shinefoundation.ca!*

At the 2nd annual **Come to Sleigh sledge hockey tournament**, 48 participants from eight corporate teams took to the ice in para-hockey equipment. Most tried the sport for the first time, working together as a team to build new skills and test their strengths all while raising \$178,500 to make Dreams come true! We're looking forward to welcoming Paralympians and Dreamers coaching teams through skills and drills for a 3rd year in Toronto on September 24th 2026!



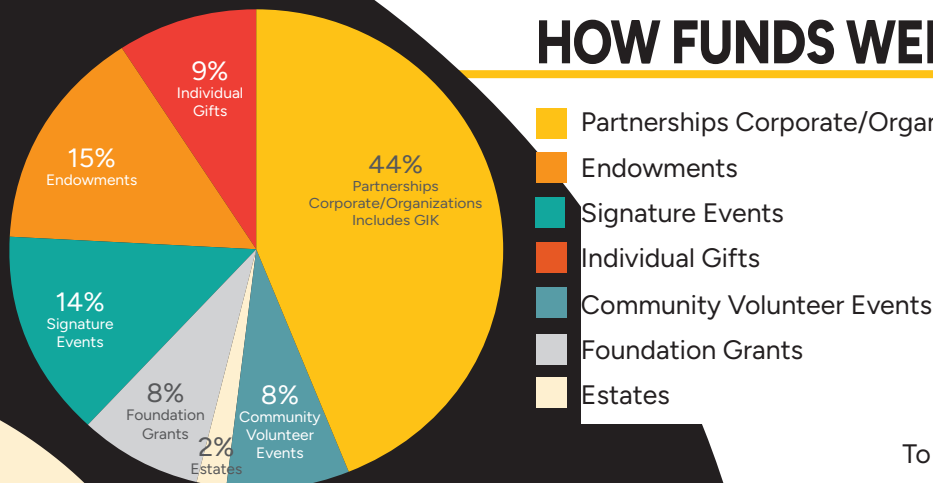
SARAH, WITH SHINE'S CEO, TIFFANY

"I'M NOT SURE IF I CAN EVER REPAY SHINE FOR WHAT THEY HAVE GIVEN ME, BUT I WILL ETERNALLY BE APPRECIATIVE FOR EVERYTHING THEY HAVE DONE. THEY GAVE ME A DREAM FOR LIFE." - SARAH LASHBROOK

Across Canada, Shine supporters, including Dreamers, family and friends, find meaningful ways to help create life-changing Dreams for others by hosting their own fundraisers.

Since Sarah's Dream in 1997, she continues to give back. For over 25 years, Sarah continues to be involved with Shine. Her efforts to rally the Sudbury community behind our Dream program sells out her the Sudbury Comedy Gala every year, with sponsors and individuals returning annually - a testament to Sarah's dedication to impacting more lives just like hers.

HOW FUNDS WERE RAISED IN 2025



Shine does not receive government support or direct funding from the United Way. *We rely on generous donors like you!*

To view the audited financial statements, visit www.shinefoundation.ca



ORGANIZATIONS AND COMMUNITY GROUP SUPPORTERS

The following partners, organizations, foundations, community events, gift-in-kind donors, and endowments have supported Shine between January 1, 2025 and December 31, 2025. Thank you!

PARTNER

\$50,000+



INSIDERSCONTENT



THE TENAQUIP FOUNDATION

BUILDER

\$25,000 - \$49,999



SUPPORTER

\$10,000 - \$24,999



The Brian Creighton and Anne May Kaufman Fund

The Windsor Foundation



FRIEND

Gifts of \$1,000+

731607 Ontario Limited
Active Mobility Products
AGO Industries Inc.
ALTA Material Handling
Animal Chain
ARLANXEO
Armstrong Collective
Best Buy - South Store,
London ON
Bruce Power
Canada Gives
Canadian Royal Purple
Canadian Spa Company
Cargill Cares High River, Alberta
Carling Heights Optimist Club
Carr's Delivery Service
Catherine Roxane Dhamija
Professional Services Inc.
Chapter One
Citrus Cycles
COBS Bread Bakery
Corporate Traveller
Della Shore Investments
Dietrich Metal Products
Do It All Events
Eco Medical Equipment
Ernie's Diner
Fidelity Investments Canada
Fraternal Order of Eagles - Aerie
2098 Calgary

Gary & Maxie Bluestein Charitable
Foundation
Grayson Music
Greater Toronto Hockey League
Halifax International Airport Authority
HME Home Health
Honda Canada Foundation
Hyatt Regency Vancouver
IG Wealth Management
International Test Pilots School
Inverted Ventures
Jewish Community Foundation of
Greater Montreal
JWW-8 Family Foundation
Karve Energy Inc.
Kinross Gold Corporation
Kinsmen Club of Winnipeg
Kitchener-Conestoga Rotary Club
Lavender Beauty Lounge
Lerners LLP Barristers & Solicitors
Lions Club of Espanola
Lohn Foundation
London Community Foundation
MacNeill Edmundson
Markel
MasterClass
Masters Insurance Ltd.
Motion
Motion - Windsor
Petrolia Lions Club

Port Stanley Lions Club
ProResp Inc.
Rand Kildare Charitable Foundation
RBC Dominion Securities - Sudbury
Rotary Club of Watford
SOMMO Festival
SOWA Tool & Machine Co. Ltd.
Stephen Smith & Dorothy Woltz
Foundation
Straz Strong Foundation
Teggart Injury Law
The Bourassa Savaria Foundation
The Greygates Foundation
The Hamber Foundation
The Henry White Kinnear Foundation
The Henslow-Brown Foundation
The John C. and Sally Horsfall Eaton
Foundation
The Rimrock Banff
The Roger & Edith Davis Foundation
The Sifton Family Foundation
Timberland Equipment Ltd.
United Steelworkers Local Union 2251
Walmart Canada Store 1211
Walmart Canada Store 3083
Walmart Canada Store 3092
Walmart Canada Store 3141
Walmart Canada Store 3151
Wilf and Jean Bell Foundation
Zaisan Financial Inc.

LEGACY GIFTS

Bill White
Memorial Dream
Endowment Fund

County Heritage /
Stevenson Hunt
Endowment Fund

Mio / Manz
Sunshine
Endowment Fund

Estate of
Elizabeth Joan
Chisholm

EVENT SPONSORS

Thank you to the community fundraisers and partners who have organized events to support Shine throughout the year.

Amanda Marascio Circle of Hope
Banff Christmas Market
Dodgeball 4 Danny
Experior Stride and Ride
Forest City Road Races
Kyle Butt Memorial Golf Tournament
Let's Rally for Kids Annual Car Rally
LiUNA Local 1089
Lucan District Lions Club
Memory Motors
Rival Office Solutions
Sebringville Firefighters
Strawberry Dreams Fun Run
Sudbury Comedy Gala

MEDIA SUPPORTERS

Corus Entertainment

OPID Technologies Inc.

For a full list of Shine's caring family of supporters, visit shinefoundation.ca



Shine
A brighter future
for youth with disabilities

Shine
A brighter future
for youth with disabilities

ANNEKA | AGE 20

**BASKETBALL WHEELCHAIR
PICTURED WITH RYAN STRASCHNITZKI,
STRAZ STRONG FOUNDATION**

“ I DIDN'T REALIZE HOW MUCH BETTER IT WOULD FEEL UNTIL I GOT MY DREAM BASKETBALL WHEELCHAIR. THE ONLY THING HOLDING ME BACK FROM BEING THE BEST IN THE WORLD IS HOW HARD I TRY, AND I WANT TO THANK YOU FOR GIVING ME THAT. ”
- ANNEKA

Shine
A brighter future
for youth with
disabilities

GET IN TOUCH
Phone: 519-642-0990
Email: info@shinefoundation.ca

   
shinefoundation.ca